

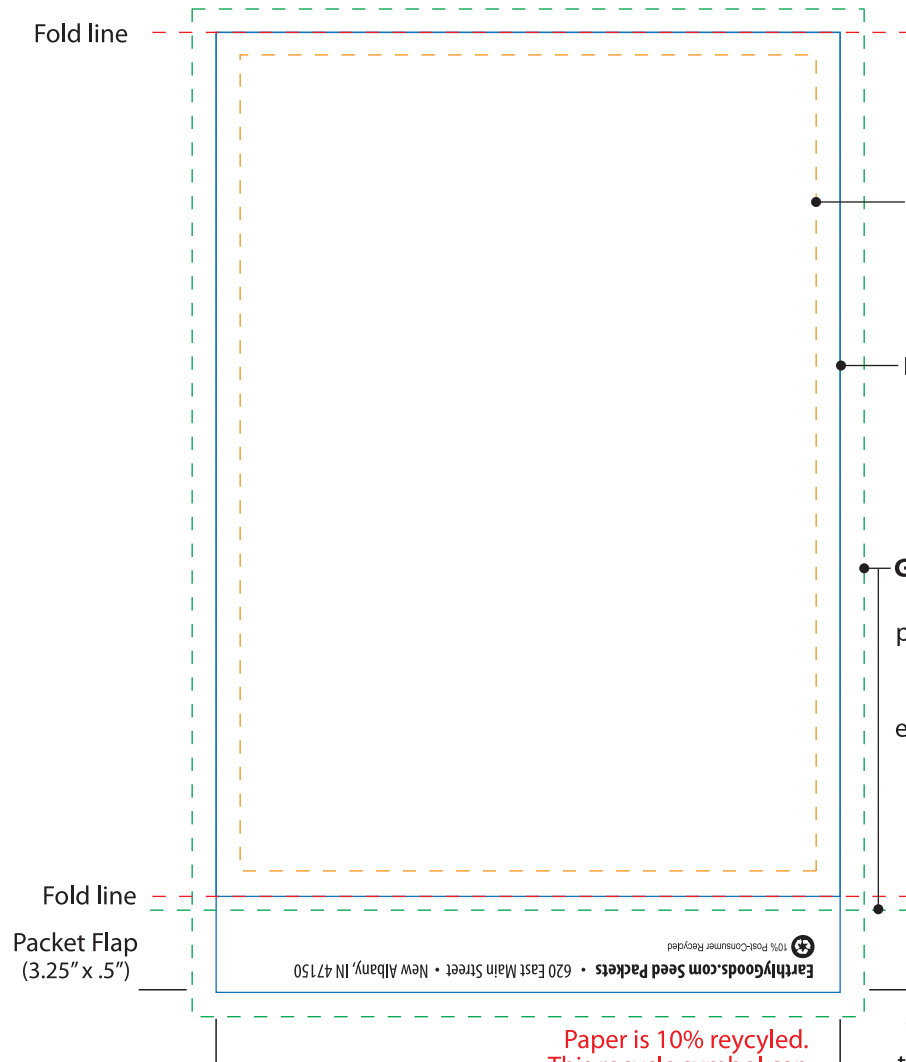
Contact [info@earthlygoods.com](mailto:info@earthlygoods.com) for required labeling info  
**BEFORE SETTING UP ARTWORK**

Standard size packet 3.25" x 4.5"

Before setting up your artwork, please email [info@earthlygoods.com](mailto:info@earthlygoods.com) for legal packet information that **MUST BE INCLUDED** in your artwork.  
Tell us the name of the seed you want to use so the appropriate information can be sent.

**IMPORT THIS 8.5"x11" PDF TEMPLATE** into your seed packet layout application, such as Adobe Illustrator, InDesign or Photoshop at 100% as a guide for designing your seed packet. *If using Adobe Photoshop, please set up your file at 300dpi at 8-1/2"x11".*

**PACKET FRONT**



Paper is 10% recycled.  
This recycle symbol can  
be included in your artwork.

Please keep important  
content (*text*) inside the  
**orange dash line**  
(1/8" from packet edge).

**Blue solid** line indicates  
the live area or edge of  
the seed packet.  
(3.25" x 4.5")

**Green dash** line indicates  
the BLEED AREA of the  
packet. If your art goes all  
the way to the edge of  
the packet, be sure to  
extend the artwork to the  
**Green dash** line.  
Either bleed your  
background to 1/16"  
beyond the bottom  
fold line onto the  
flap, or 1/8" beyond  
the trim edge of  
the flap.

The flap folds and glues  
to the bottom area of the  
back side of the packet.

**PACKET BACK** (3.25" x 4", not including the flap)

